



SUPERMARKET SHELF

超市货架



CERS-001 LxWxH: 3400x980x1800 (mm)



CERS-002 LxWxH: 2900x980x2400 (mm)



CERS-003 LxWxH: 2400x480x2400 (mm)



扫码了解
更多详情
Scan the code to
learn more

苏州常尔盛商业设备有限公司 Suzhou CERS Commercial Equipment Co., Ltd.

江苏省苏州市常熟市尚湖镇王庄工业园永鑫路9号
No.9, Yongxin Road, Wangzhuang Industrial Park, Shanghu Town,
Changshu City, Suzhou City, Jiangsu Province, China.

销售热线(TEL): +86-138 6232 0777 +86-188 5291 6580
邮箱(E-MAIL): charles@changersheng.com
网站: www.szcers.com

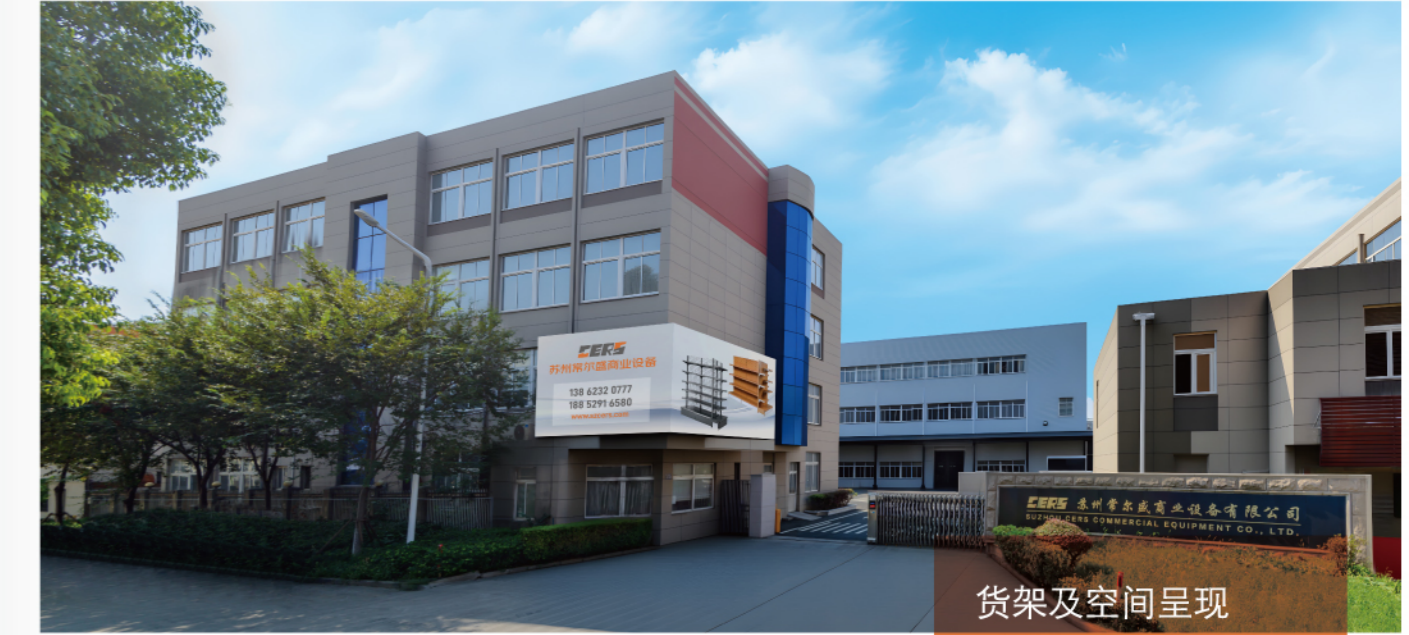


CERS COMMERCIAL EQUIPMENT

常尔盛商业设备



苏州常尔盛商业设备有限公司
Suzhou CERS Commercial Equipment Co., Ltd.



货架及空间呈现

系统解决方案供应商

SHELF AND SPACE
PRESENTATION
SYSTEM SOLUTION
PROVIDER

COMPANY PROFILE

公司简介

2015

常尔盛商业设备有限公司成立于2015年
CERS Commercial Equipment Company was
established in 2015

12000

现代化生产厂区, 占地面积1.2万平方米
Modern production plant area, covering an area
of 12,000 square meters



国家高新技术企业
National High-tech Enterprise

100

地处上海为经济中心的100km经济辐射圈之常熟
Changshu, located in the 100km economic
radiation circle centered in Shanghai

1000+

1000多平方米的展厅, 提供不同风格及用途的样品参考
More than 1,000 square meters of exhibition hall,
providing sample references for different styles
and purposes

ISO

公司通过ISO9001: 2008质量管理体系
The company has passed the ISO9001: 2008
quality management system

4000

积极响应减少碳排放的号召, 投资建设了4000平方
米的太阳能电站, 为生产制造提供清洁能源

In response to the call for reducing carbon
emissions, a 4,000 square meters solar power
station was invested and constructed to provide
clean energy for production and manufacturing

360

全方位、全流程的精细生产与无忧服务
All-round, all-process fineproduction and
worry-free service

20

产品远销英法德、中东等20个国家和地区
Our products are exported to 20 countries and
regions including England, France, Germany,
and the Middle East

CERS
SUPERMARKET SHELF
 超市货架



CERS-004 L×W×H: 2900×1000×2400 (mm)



CERS-005 L×W×H: 2900×1000×2400 (mm)

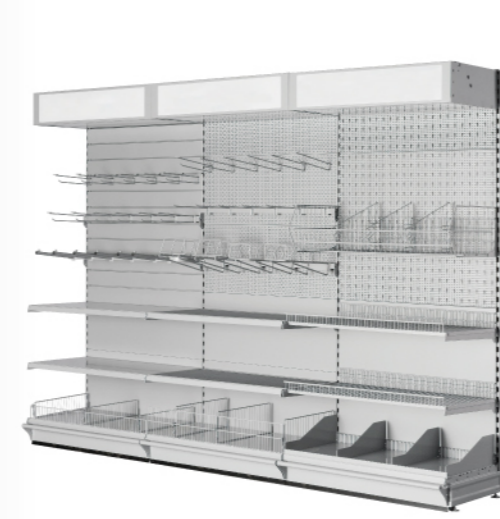


CERS-006 L×W×H: 2400×480×2800 (mm)



CERS-007 L×W×H: 2400×480×3000 (mm)

CERS
SUPERMARKET SHELF
 超市货架



CERS-008 L×W×H: 3000×480×2400 (mm)



CERS-009 L×W×H: 4000×980×3000 (mm)

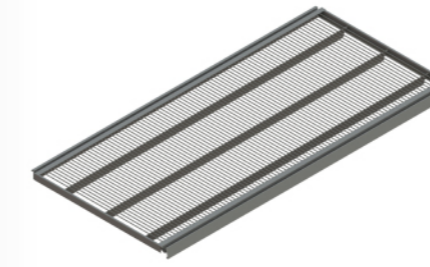


CERS-010 L×W×H: 2400×480×2400 (mm)

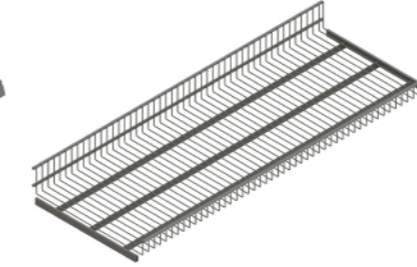


CERS-011 L×W×H: 2900×980×1600 (mm)

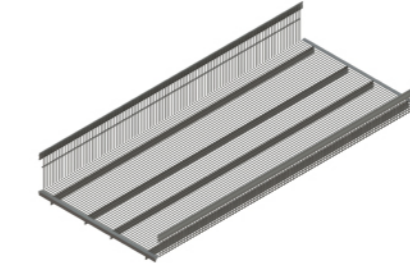
CERS
ACCESSORIES
 配件



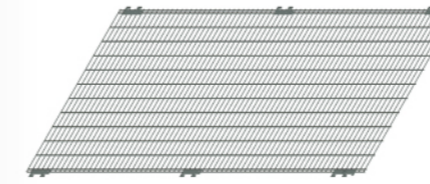
网层板1
 Wire Shelf 1
 L: 665/800/1000/1250/1330
 W: 300/370/470/570



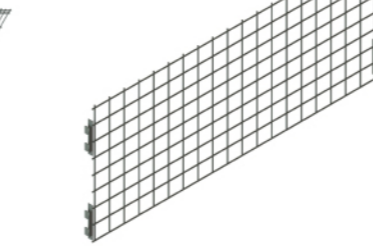
网层板2
 Wire Shelf 2
 L: 800/900/1000/1200/1250/1330/665
 W: 350/370/400/450/470/500/570
 H: 80



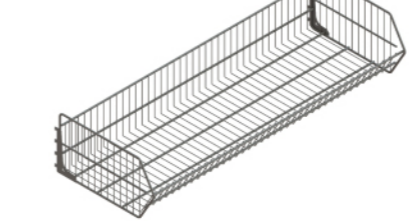
网层板3
 Wire Shelf 3
 L: 665/800/1000/1250/1330
 W: 370/470/570



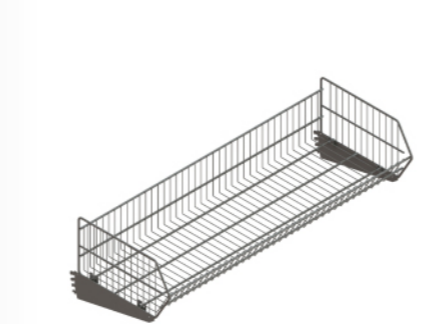
背网1
 Back Mesh Panel 1
 W: 600/665/800/900/1000/1200/1250
 H: 1400/1500/1600/1800/2000/2200



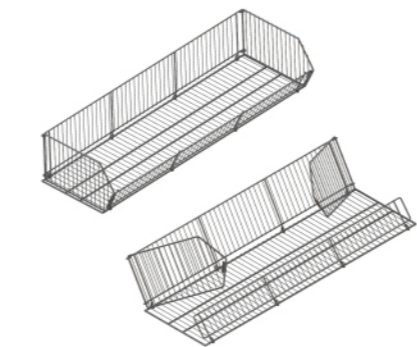
背网2 25/50孔距Pitch
 Back Mesh Panel 2
 W: 665/800/900/1000/1200/1250
 H: 300/400



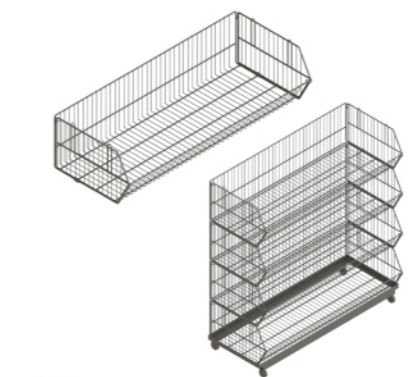
网篮1
 Wire Basket 1
 L: 600/800/900/1000/1100/1200/1250
 W: 350/400/450/500/370/470
 H: 250



网篮2
 Wire Basket 2
 L: 600/800/900/1000/1100/1200/1250
 W: 350/400/450/500/370/470
 H: 250



网篮3
 Wire Basket 3
 L: 600/900/1200
 W: 300/350/400/450
 H: 250

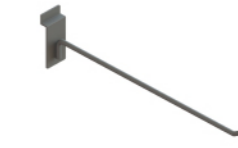


网篮4
 Wire Basket 4
 L: 600/800/900/1000/1100/1200/1250
 W: 350/400/450/500/370/470
 H: 300

CERS
ACCESSORIES
 配件



孔背板单线挂钩
 Single Hook for Perforated Back Panel
 L: 100/150/200/250/300/350/400



槽背板单线挂钩
 Single Hook for Slatwall Back Panel
 L: 100/150/200/250/300/350



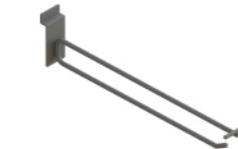
网片单线挂钩
 Single Hook for Wire Mesh
 L: 100/150/200/250/300/350/400/450



横梁单线挂钩
 Single Hook for RSB
 L: 100/150/200/250/300/350/400/450



孔背板双线挂钩
 Double Hook for Perforated Back Panel
 L: 100/150/200/250/300/350/400



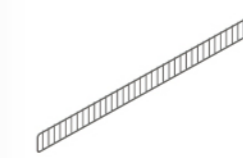
槽背板双线挂钩
 Double Hook for Slatwall Back Panel
 L: 100/150/200/250/300/350



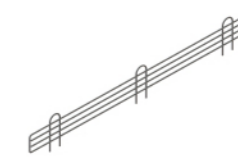
网片双线挂钩
 Double Hook for Wire Mesh
 L: 100/150/200/250/300/350/400/450



横梁双线挂钩
 Double Hook for RSB
 L: 100/150/200/250/300/350/400/450



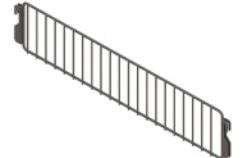
护栏1
 Wire Front Fence 1
 L: 600/800/900/1000/1200/665
 W: 1250/1330
 H: 60/75/95



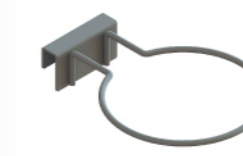
护栏2
 Wire Front Fence 2
 L: 600/800/900/1000/1100/1200
 W: 500/550/570
 H: 50



层板隔片1
 Wire Divider 1
 W: 300/350/370/400/450/470/500
 H: 50/75/95



层板隔片2
 Wire Divider 2
 W: 300/350/370/400/450/470
 H: 50/550/570
 H: 75/95



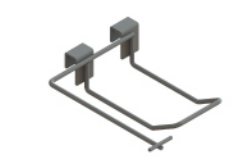
单球架
 Ball Rack 1
 L: 230 W:160



双球架
 Ball Rack 2
 L: 500 W: 150



电吹风机架
 Hair Dryer Hook
 L: 300 W: 250



电钻挂钩
 Electric Drill Hook
 L: 100 W: 150



碗架
 Bowl Rack
 L: 350/400/430/450



碟架
 Plate Rack
 L: 350/400/430/450



鹅颈挂钩
 Waterfall Arm
 L: 350/400/430/450



L形圆管挂钩
 Single Arm with L-shaped Hooks
 L:350/400/430/450